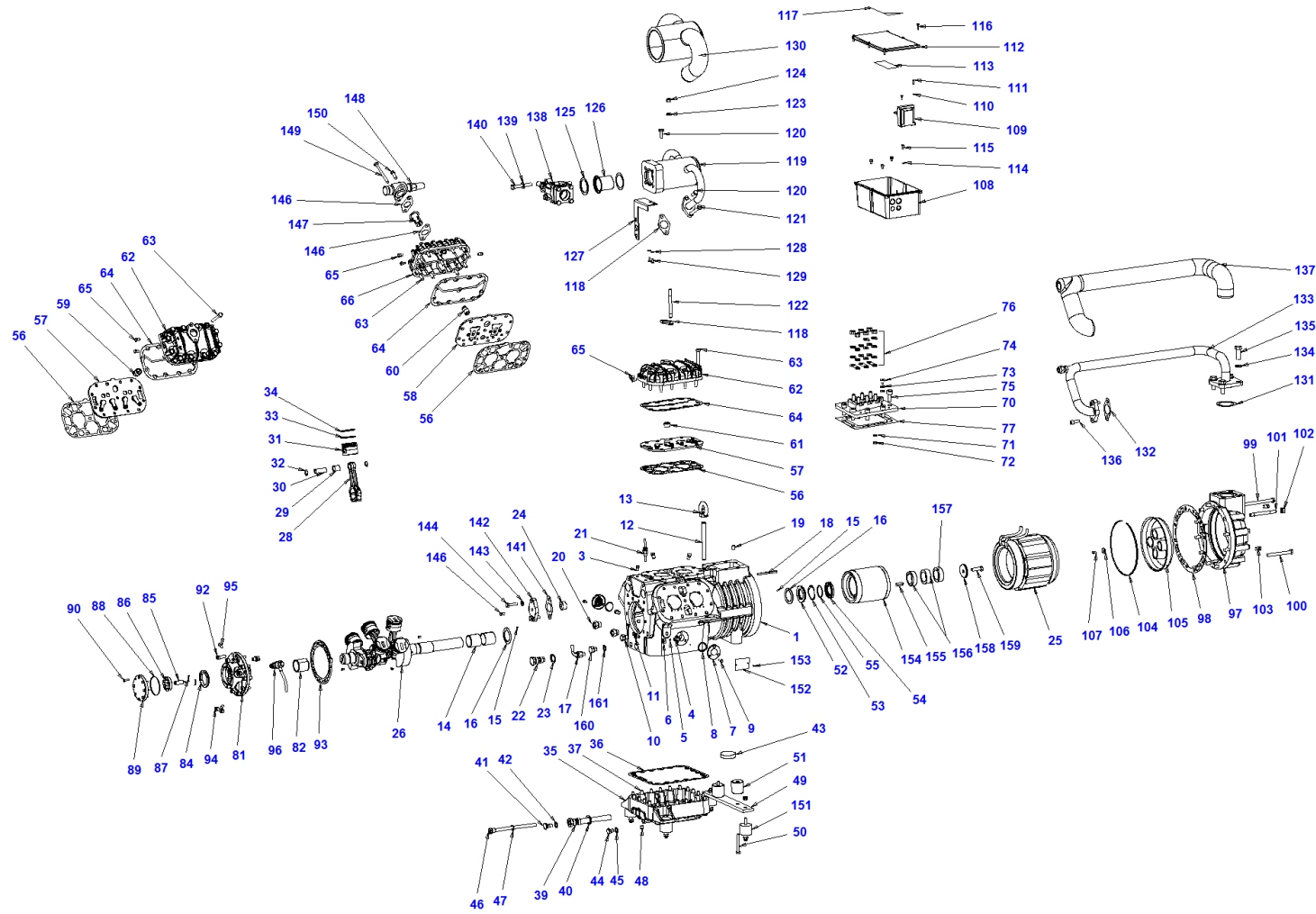


Z 30 102 51 Y



Pos.	Code	Description	Quantity	Note	Notice:
1	S6501001AA	Compressor body	1		
2	S6501130	Plug 1/4 NPT	3		
3	S1251130	Plug 1/8 NPT	1		
4	RA1001000	Connection 90° 1/4 NPT - 1/4 SAE	1		
5	G200002	Copper nipple	1		
6	G1800F026	Filler 1/4 SAE	1		
7	SOS1	Oil sight glass	1		
8	S3131OR	O-ring for oil sight glass	1		
9	TE1006016	Screw M6x16 UNI5739	3		
10	S8601130	Plug 3/8 gas ISO 228/1	1		
11	S6501056	3/8 gas gasket	1		
12	RM1016160	Screw	1		
13	GO2016000	Raising ring	1		
14	S6501013-A	Main friction bearing	2		
15	SE1004008	Pin	2		
16	S6501011	Thrust collar	2		
17	S860A070	Oil return valve	1		
18	S6301063	Key 8x5x90 UNI 7510	1		
19	GR101016	Stop dowel	1		
20	S650A076	Pressure regulatng valve	2		

Pos.	Code	Description	Quantity	Note	Notice:
21	EC50D	Temperatur sensor diagnose	1		
23	S8701056	3/4 gas gasket	1		
24	TA1501000	Plug 1" NPT	1		
25	RS15CAMS	Stator 400 / 3 / 50 PWS	1		
26	S6501002AA	Shaft	1		
27	GR100810	Stop dowel	3		
28	S6501003AA	Connecting rod	1		
29	S6501027-A	Connecting rod friction bearing	1		
30	S6501005	Piston pin	1		
31	S6501004-A	Piston	1		
32	S6301149	Circlip	2		
33	S6506001	Oil scraper ring	1		
34	S6505001	Compression ring	1		
35	S8701014AA	Bottom plate	1		
36	S8601015	Gasket for bottom plate	1		
37	TE1210075	Screw M10x75 UNI5737	17		
38	TC2210075	Screw M10x75 UNI5931	3		
39	S4501047-A	Oil strainer	1		
40	S8701056	3/4 gas gasket	1		
41	S8601130	Plug 3/8 gas ISO 228/1	1		

Pos.	Code	Description	Quantity	Note	Notice:
42	S6501056	3/8 gas gasket	1		
43	W3501128	Magnet	1		
44	S1451130	Plug 1/4" gas ISO 228/1	1		
45	S1351056	Gasket	1		
46	S4601351	Sleeve for Crankase Heater	1		
47	S6501056	3/8 gas gasket	1		
48	TA1514000	Plug 1/4" NPT	1		
49	S4501018AA	Thrusting plate	1		
50	TE1210075	Screw M10x75 UNI5737	2		
51	S4301085	Support	2		
52	S6501078	Shaft thrust bearing	1		
53	ANLMKAS62	Spring	1		
54	S6501120	Thrust collar	1		
55	S3175OR	OR3175	1		
56	S6501031D	Gasket valve plate - body	3		
57	S6501026DS1	1st stage valve plate	2		
58	S6501026DS2	2nd stage valve plate	1		
59	S6401156	Safety relief valve	1		
60	S4491156	Safety relief valve	1		
61	TA1534000	Plug 3/4" NPT	1		

Pos.	Code	Description	Quantity	Note	Notice:
62	S6501007DS1	1st stage head	2		
63	TE1210075	Screw M10x75 UNI5737	36		
64	S8701032	Gasket valve plate - head	3		
65	S1251130	Plug 1/8 NPT	7		
66	S6501007DS2	2nd stage head	1		
70	S8601040	Terminal plate	1		
71	RO1106012	Washer 6.4x12x1.6 UNI 6592	6		
72	DE2206006	Nut M6X1X6 DIN 980	6		
73	RO1106012	Washer 6.4x12x1.6 UNI 6592	2		
74	TS4006008	Screw M6x8 ISO 7045	1		
75	TC2710025	Screw M10x25 UNI5931	8		
76	SK261310	Staple bars connection kit - V/Z/W NEW	1		
77	S4501043C	Connections plate gasket	1		
81	S4951009AA	Flange	1		
82	S6501012-A	Friction bearing flange side	1		
84	S6301069	Oil pump eccentric	1		
85	S6501049	Oil pump stud	1		
86	S4951125	Oil pump gear	1		
87	S4951134	Oil pump spring	2		
88	S3300OR	O-ring for oil pump cover	1		

Pos.	Code	Description	Quantity	Note	Notice:
89	S6301067AA	Oil pump cover	1		
90	TE1006020	Screw M6x20 UNI5739	8		
91	S4951044	Oil pump safety valve	1		
92	TC2410030	Screw M10x30 UNI5931	10		
93	S6501033C	Flange gasket	1		
94	RA2001030	Connection a T 1/8 NPT-1/4 Sae-1/4 Shrader	1		
95	S1251130	Plug 1/8 NPT	1		
96	EC1630DRIC	DIFF. PR. SWITCH KIT INT250	1		use EC1620RIC with DELTA P2
97	S6301010AA	Suction flange	1		
98	S6501034C	Suction flange - body gasket	1		
99	TE1212140	Screw M12x140 UNI5737	2		
100	TE1212110	Screw M12x110 UNI5737	8		
101	S6301153	Screw M12 L=105	2		
102	DE1112012	Nut M12x1,75x12 UNI 5587	2		
103	S6501130	Plug 1/4 NPT	2		
104	AN2023000	Ring	1		
105	S6501038-A	Suction strainer	1		
106	RO1006024	Washer M6x24 UNI 6593	1		
107	TE1006012	Screw M6x12 UNI5739	1		
108	S8601039	Terminal box	1		

Pos.	Code	Description	Quantity	Note	Notice:
109	ECA11D	INT69 TML diagnose module kit	1		use ECA11D-UPG with INT 69 TM
110	RO1004009	Washer M4x9 UNI 6592	2		
111	TS4103016	Screw M3,9x16 UNI 6954	2		
112	S8601042	Terminal box	1		
113	M115-00	Starting drawing	1		
114	RO2006011	Washer 6x10 UNI 1751A	4		
115	TS4006012	Screw M6x12 ISO 7045	4		
116	TE4804022	Screw M4.2x22	6		
117	M066-00	Security operation drawing	1		
118	S4751055	Valve gasket	4		
119	S6501111DS1	Suction collector	1		
120	TE1010030	Screw M10x30 UNI5739	2		
121	TE1210110	Screw M10x110 UNI5737	1		
122	S6351153	Screw M10 L=105	1		
123	RO1010020	Not available - substitute by RO1008021	1		
124	DE1010008	Nut M10 UNI 5587	1		
125	S6301055B	Valve gasket	2		
126	S6401038-A	Suction strainer	1		
127	S6501117	Bracket	1		
128	RO1006012	Washer M6x12.5 UNI 6592	2		

Pos.	Code	Description	Quantity	Note	Notice:
129	TE1006012	Screw M6x12 UNI5739	2		
130	V0001461	Cap	1		
131	S6301055B	Valve gasket	1		
132	S4501058D	Valve gasket	1		
133	S6501110DS1	Suction collector	1		
134	RO1016030	Washer M16x30 UNI 6592	4		
135	TE1016045	Screw M16x45 UNI5739	4		
136	TC2410030	Screw M10x30 UNI5931	2		
137	V0001458	Cap	1		
138	VGS080078	Valve	1		
139	RO1012024	Washer M12x24 UNI 6592	4		
140	TE1212085	Screw M12x85 UNI5737	4		
141	S4501058D	Valve gasket	1		
143	RO1010020	Not available - substitute by RO1008021	2		
144	TC2410040	Screw M10x40 UNI5931	2		
145	S1251130	Plug 1/8 NPT	1		
146	S4751055	Valve gasket	2		
147	S6501065A	Pulsations reducer	1		
148	T00VRS060066	Valve 1' 3/8	1		
149	TE1210110	Screw M10x110 UNI5737	1		

Pos.	Code	Description	Quantity	Note	Notice:
150	TE1010030	Screw M10x30 UNI5739	1		
151	SK205060	Rubber vibration absorber kit	1		
152	ML_Q	Nameplate	1		
153	RI1025035	Rivet	2		
154	RR17S	Rotor	1		
155	S4301063	Key 12x8x80 UNI 6604-69	1		
156	S4001061	Spacer for rotor	1		
158	S4501045	Washer	1		
159	TE1012035	Screw M12x35 UNI5739	1		
	S650A004	Piston kit	1		
	SK100660	Valve kit	1		
	SK103800	Suction valve kit	1		
	SK132700	Connecting rod/piston kit	6		
	SK140400	Friction bearing kit	1		
	SK170100	Oil sight glass kit	2		
	SK182100	3 ph terminal box kit	1		
	SK190100	Oil strainer kit	1		
	SK210000	Oil pump kit	1		
	SK231913	Complete electric motor - 400 / 3 / 50 PWS	1		
	SK231916	Complete electric motor - 230-400 / 3 / 60 DOL	1		

Pos.	Code	Description	Quantity	Note	Notice:
	SK261040	Electric connections kit	1		
	SK261310	Staple bars connection kit - V/Z/W NEW	1		
	SK2630	Gasket kit	1		
	SK330030	Interstage kit	1		
	SK330040	Interstage kit	1		
	SK63005	2nd stage valve plate kit	1		
	SK63006	Valve plate kit	1		
	SK890000	Kit thrust collar and spring V - Z	1		